

Rebuilding Data Files

Generally, it's good practice to rebuild all the files once or twice a year. When attempting to rebuild an entire company code's data files, you can use wildcards to include full sets of files e.g. ??????CCC and CCC*-V* to account for the various files that are included in that company's data set.

The most heavily used files (which means they grow fastest) should be rebuilt more frequently e.g. every 2 months. In order to figure out which would be the correct files, you could open the Global\FILES folder and sort the files by DATE MODIFIED or SIZE. Do the same with the Global\DDF\CCC folder.



Target rebuild files are located in the ..\Global\Files and the ..\Global\DDF\CCC folder where CCC represents *your* company code. Within the ..\Global\DDF\CCC folder, be sure to rebuild .MKD extension files only (Do not attempt to rebuild .DDF files).

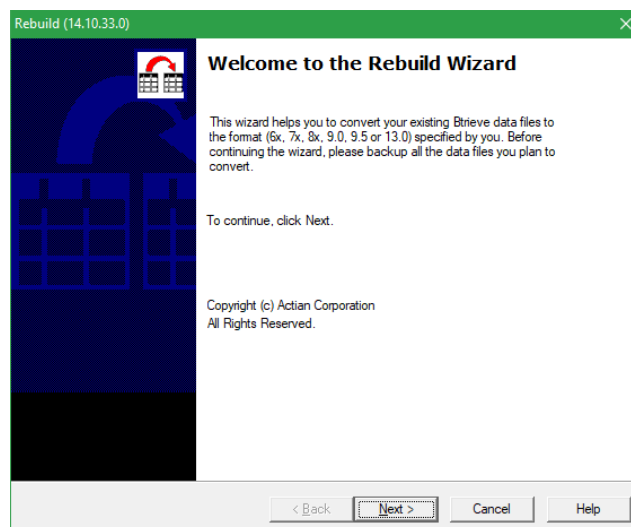
Important *for faster rebuild time please carry the instructions below at the GS server.*

Important *It's recommended that you stop and restart Pervasive SQL services before rebuilding ALL files to make sure there are no files in use during the rebuild as those will be skipped.*

There are 3 different methods that can be used to rebuild files - choose the one that works best for your environment.

Method 1 - Using Pervasive/Zen Rebuild Wizard

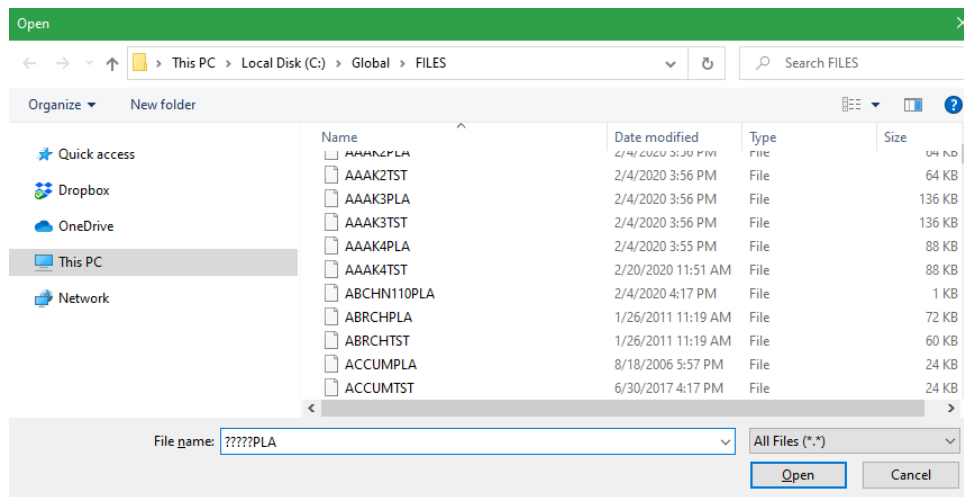
On the GSS server, launch the Rebuild utility from Tools > Rebuild on the toolbar within the Pervasive Control Center (PCC) -- or Zen Control Center (ZenCC) for Zen users. Alternatively, you can launch it from within Global Shop via the "Rebuild Utility/Cleanup" menu item (*System Support > Administration > Rebuild Utility/Cleanup*)



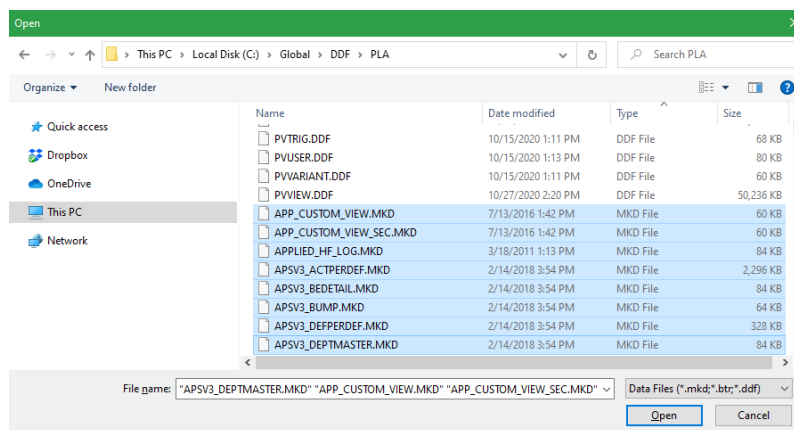
Rebuilding Data Files

On the File Options window click on 'Add' and browse to your ..\Global\Files folder. On the file explorer window change the filter at bottom-right to "All Files (*.*)" in order to view your company files. Highlight the file(s) that you would like to rebuild and click 'Open'.

If you would like to rebuild larger sets of company files, you can use wildcards such as ?????CCC or CCC*-V* to filter only files that fall under that naming convention (where CCC is your company code). Select all or any subset of the remaining files Click 'Open' and all selected company files should be chosen. Click Open again after selecting all company files.

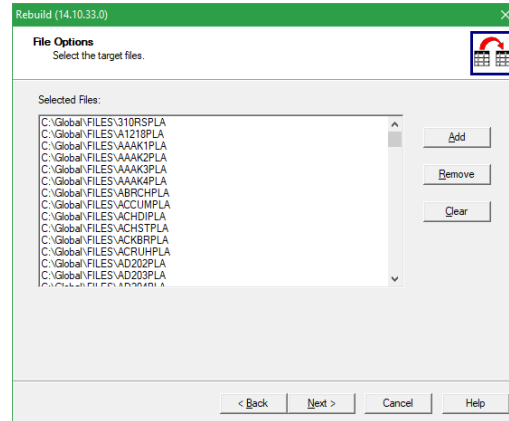


To rebuild MKD files, click on the Add button in the File Options screen and browse to the ..\Global\DDF\CCC folder. If necessary, change the view mode to Detail so that the Type column can be seen and then click on the Type column title to sort the files by Type. Select only the "MKD File" types – **do not attempt to rebuild "DDF file" types.**

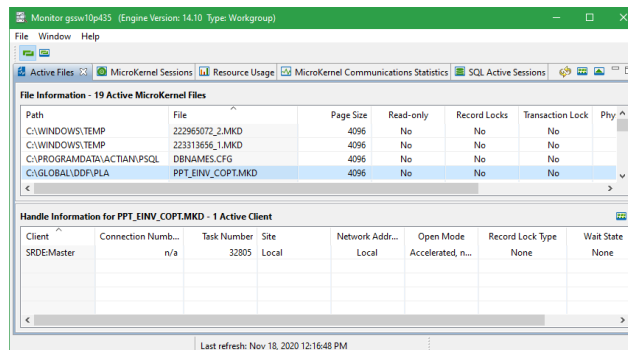


Once all the files to be rebuilt are added to the 'Selected files' list, click Next

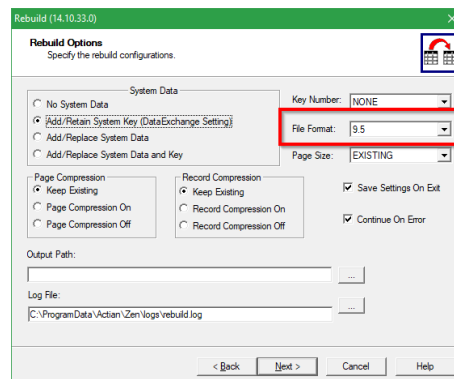
Rebuilding Data Files



Note: For successful rebuilding of files, ensure that no users have the files open; if so close out the users. You can check if any users have the file open by launching Pervasive Control Center (or Zen Control Center for Zen users) from the database server. With the Control Center open, choose Tools from the top menu bar, and then Monitor – the Monitor tool will not display proper information when run from a client.



On the Rebuild Options window ensure that the File Format option is set to 9.5.



The rebuild should run and give a message if it was successful. If the rebuild was successful, click on the finish button to complete the process. If it says there was an error rebuilding the file, click on the 'View Error Log' button to view the error code. Please save the error log file and send it to GS.

Rebuilding Data Files

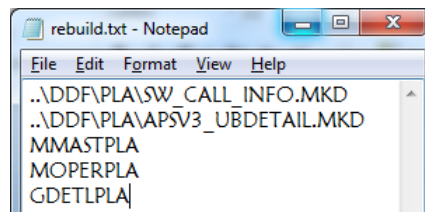
Method 2 - Using Rebuild.exe

This rebuild method is good rebuilding files **unattended**, or if you rebuild the same files all the time. It does not rebuild MKD files.

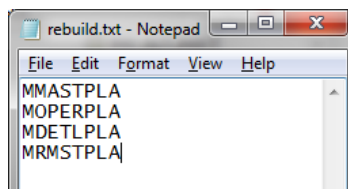
1. Download www.gss-tech.com/Rebuild.zip and extract directly into the Global\Files folder
2. A text file named "REBUILD.TXT" is required in the Global\FILES folder when rebuilding. The data files entered in this file are the ones that will be rebuilt. To rebuild all your company code files, open the command prompt and point to the Global\Files folder, then type the following 2 commands, and hit ENTER after each one: `dir ?????xxx.* /b >> REBUILD.txt`
(command spacing is: `DIR[SPACE]?????xxx.*[SPACE]/b >> rebuild.txt`)
(Make sure to substitute the xxx above with your company code).

The next command to type is `dir xxx*.* /b >> REBUILD2.txt`
(Note the text file name above has a '2' at the end to prevent over-writing the first one. Open this file and append all the records to the REBUILD.txt file as the Rebuild program only looks at this one)

Add all the files in Global\DDF\XXX that have a ".MKD" extension to the REBUILD.txt, and make sure to precede each file name with "..\DDF\XXX\" – see example below



If you only want to rebuild a few data files, enter the names in a new REBUILD.txt file manually.



3. When users are out of GS not using files listed in REBUILD.txt, run Global\Files\REBUILD.exe to start rebuilding the files (you can verify on the pervasive monitor that the file is not in use).
4. You could then add a windows task that is timed, that would call REBUILD.exe at a particular time. To do this, go to Control Panel > Administrative Tools > Computer Management > System Tools > Task Scheduler > Task Scheduler Library >

Rebuilding Data Files

A file rebuild is recommended every 6 months. It may take a while to rebuild the data, so you may have split up the files and run this a few times to complete all files.

Method 3 - Using GAB and Task Scheduler

Method 3 uses Global Shop Task Scheduler and rebuilds the tables in PCC (versus rebuilding the files like in method 1 & 2). Get into Pervasive and login to your Company DB e.g GlobalMAF
Expand System Objects > Tables, and open the X\$File table.

The Xf\$Loc field will list the file names that reside mostly in the Global\Files folder. Files with a MKD extension will reside in the Global\DDF\CCC folder. Once you have located the file under the Xf\$Loc field, check for the corresponding table in the XF\$Name field and add it to the list of files to rebuild.

You will need **ATG_RebuildUtility.gas** and **.sig** files in the Global\PLUGINS\GAB\GAS folder – please download from http://www.gss-tech.com/INSTALL/ATG_rebuild.zip

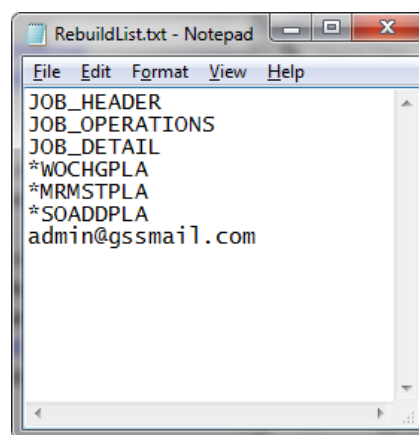
Create a new text file in the Global\Files folder and rename the file to 'RebuildList.txt'. Add the Tables to rebuild in list format. If you will be rebuilding files instead, add the File name preceded by an asterisk '*' to denote rebuild of a file instead of a table - see example below:

In this example we are rebuilding tables JOB_HEADER, JOB_OPERATIONS and JOB_DETAIL, and also rebuilding files WOCHGPLA, MRMSTPLA and SOADDPLA.

Please note that listing the table name is the same as rebuilding an MKD file (as denoted in the first rebuild method).

Enter the email address of the person the rebuild log will be emailed to after the rebuild is complete at the bottom of the list.

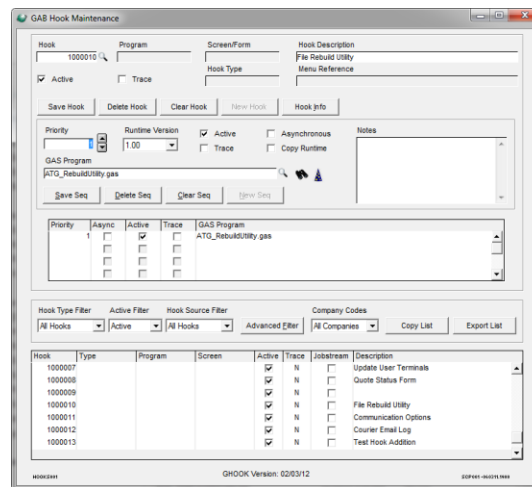
Please note that Courier must be running for the email to be sent.



Rebuilding Data Files

We will need to add this to the Active GAB scripts through System Support > Administration > GAB Script Hook Maintenance.

Click on the 'New Hook' button to generate a new hook number. Enter 'File Rebuild Utility' in the 'Hook Description' field. Click on 'New Seq'. Using the search glass icon, browse through 'My Network' places to the GAS folder and select **ATG_RebuildUtility.gas** file. Make sure that both 'Active' boxes are selected. Click on 'Save Seq' and then on 'Save Hook'



Go to System > Support > Task Scheduler Maintenance

Click on 'Add New' and select the 'GAB Script' option. Use the search glass icon next to the Jobstream field to browse and select the File Rebuild Utility hook number that you added earlier. In the Frequency box select 'Once' (or Monthly if you choose to rebuild every month). Select the 'Start Date' and 'Start Time' of the rebuild and click 'Save'.

Please make sure to rebuild when everyone is out of the system.

Note: The Online Update must be running in order to trigger the Task Scheduler tasks.

